

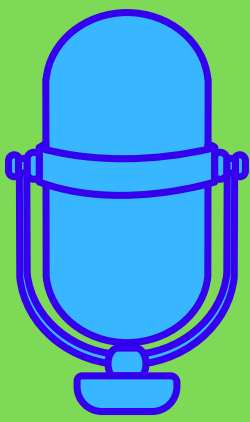


COMPATIBLE MICROPHONES KENWOOD

Find input connection type below (8-pin Round, 4-pin Round, 8-pin Modular) for proper Heil adapter cable, compatible radios, and products. If your radio model is not listed, consult your radio manual for input type, and contact your radio manufacturer if necessary.

RECOMMENDED PRODUCTS

Heil dynamic (D) element products designed to work with Kenwood radios.



4-Pin XLR Microphones

Current Models: Gold Elite, Handi Mic Pro, HM-12, HM-10XD

Discontinued Models: Classic 4/5, GM 4/5, Handi Mic 4/5, HM-10 4/5, HM-10 Dual

3-Pin XLR Microphones

Current Models: Handi Mic Pro Plus, PR 10, PR 20/UT, PR 22/UT, PR 28, PR 30, PR 40, PR 77D, PR 781, The Fin

Discontinued Models: Classic Pro/HRRC, Heritage/780

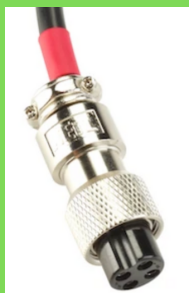


8-pin Round :

Heil CC-1-K adapter cable for **4-Pin XLR**

Heil CC-1-XLR-KB adapter cable for **3-Pin XLR**

Compatible radios: TS-50, TS-140, TS-430, TS-440, TS-570, TS-590, TS-870, TS-890, TS-940, TS-950, TS-990, TS-2000



4-pin Round : (4-Pin XLR Mics Only)

Heil CC-1-K4 adapter cable for **4-Pin XLR**

Compatible radios: TS-120, TS-130, TS-520, TS-820



8-pin Modular :

Heil CC-1-KM adapter cable for **4-Pin XLR**

Heil CC-1-XLR-KM adapter cable for **3-Pin XLR**

Compatible radios: TS-480/480HX/SAT, TM-D710GA, TM-V71A, TM-281A, VHF/UHF Mobiles