



COMPATIBLE HEADSETS & MICROPHONES ELECRAFT

Find radio model below for proper Heil adapter cable and compatible products.

RECOMMENDED PRODUCTS

Compatible Headsets



K2 : Heil **AD-1-K** adapter cable

Heil iC Element Headsets Only

Current: BM-10 iC, BM-17 iC, Pro Micro iC, Pro7 iC, Pro Set iC, Pro Set Elite iC

Discontinued: BM-5 iC, Pro Set Plus iC, Traveler (w/ HSTA-K8 cable).

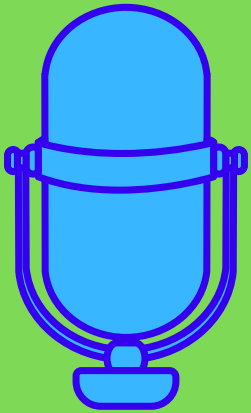
K3 / K3S / K4 : Heil **AD-1-K** adapter cable

All Heil headsets (except Pro Set Media Pro, HTH)

KX3 / KX2 : Heil **AD-1-KX3** adapter cable

All Heil headsets (except Pro Set Media Pro, HTH, Traveller)

Compatible Microphones



K2 :

Heil iC Element Microphones Only

Current: Handi Mic iC (w/ **CC-1-K** adapter cable), **HMM iC** (w/ **AD-1-K** adapter cable), **iCM** (w/ **HSTA-K8** adapter cable)

Discontinued: Classic iC (w/ CC-1-K adapter cable).

K3 / K3S / K4 :

4-Pin XLR Microphones: Heil **CC-1-K** adapter cable

Current: Gold Elite, Handi Mic iC, Handi Mic Pro, HM-12, HMM (w/ **AD-1-K** adapter cable), **HMM iC** (w/ **AD-1-K** adapter cable), **iCM** (w/ **HSTA-K8** adapter cable), **HM-10XD**

Discontinued: Classic 4/5, Classic iC, GM 4/5, Handi Mic 4/5, HM-10 4/5, HM-10 Dual

3-Pin XLR Microphones: Heil **CC-1-XLR-KB** adapter cable

Current: Handi Mic Pro Plus, PR 10, PR 20/UT, PR22/UT, PR 28, PR 30, PR 40, PR 77D, The Fin

Discontinued: Classic Pro/HRRC, Heritage/780